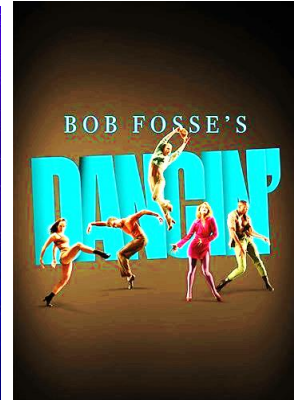
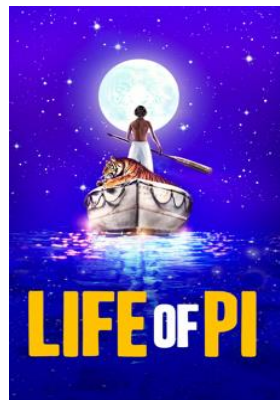
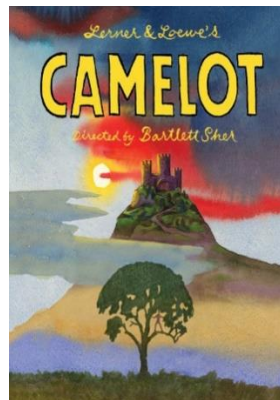




**Richard Hanson's  
Give My Regards to Broadway Theatre Tour  
October 2023**

*Take your seat for four of Broadway's best new shows, such as...*



*We'll stay in the heart of Manhattan...*



*Enjoy **6 nights at the historic Warwick Hotel**, built in 1926 by William Randolph Hearst for the love of his life, actress Marion Davies.*

*The hotel is steps away from Rockefeller Plaza, Central Park, The Museum of Modern Art, Broadway theatres and Fifth Avenue shopping. The perfect location...*

*Plans also include...*

- Daily discussions of our theatre experiences with Professor Hanson.
- Visits to the **new Broadway Museum** and the spectacular **Summit One Vanderbilt**, high atop **Grand Central Terminal** and lunch at the iconic **Oyster Bar**
- A tour of **Carnegie Hall**, a visit to the **American Folk Art Museum** and lunch overlooking **Central Park**.
- A leisurely day at the **Metropolitan Museum of Art**.
- A pre-theatre dinner near **Lincoln Center**
- A free day to explore the city.
- A farewell dinner to recap the week's highlights and more.

*Come on along and listen to the lullaby of Broadway...*

## Limited Availability

## Reserve Your Space Now!

\_\_\_\_\_ **Group 1:** Tuesday, Oct 3 (*travel day*)– Monday Oct 9 (*travel day*)  
Activities start on Wednesday, Oct 4 and end on Sunday, Oct 8.

\_\_\_\_\_ **Group 2:** Tuesday, Oct 10 (*travel day*) – Monday, Oct 16 (*travel day*)  
Activities start on Wednesday, Oct 11 and end on Sunday, Oct 15.

Tour Cost: \$4795 per person (based on double occupancy) Single Supplement: \$1200

**Includes:** Four Broadway shows, six hotel nights, two lunches, two dinners, post-theatre transportation, scheduled museum admissions, tours and more. (*Airfare not included*)

Please note: *Our itinerary requires a significant amount of walking. Tour participants should be comfortable walking in the city and climbing stairs into and out of the subway. Alternate transportation to activities is the responsibility of the traveler. (If you have concerns, please contact us.)*

**To reserve your place, please call us at 520-777-5817 or email us at [info@thelearningcurvetucson.com](mailto:info@thelearningcurvetucson.com) .**

---

**Send completed form to: The Learning Curve P.O. Box 41776 Tucson, AZ 85717**

Name: \_\_\_\_\_

Address: \_\_\_\_\_

Cell Phone: \_\_\_\_\_

Email: \_\_\_\_\_

Room Occupancy Request:

\_\_\_ Double 1 King bed or 2 Double beds.

\_\_\_ Single (1 King bed) (Supplemental cost applies)

For Double occupancy, list companion's name, phone # and e-mail address if not listed above:

---

### Payment Schedule:

\$795 Deposit per person\*

**Due with reservation**

\$2000 per person (double occupancy) or \$2600 (with single supplement)

**Due by May 15**

\$2000 per person (double occupancy) or \$2600 (with single supplement)

**Due by August 15**

Form of Payment: \_\_\_ Check \_\_\_ Mastercard \_\_\_ Visa \_\_\_ American Express

Card # \_\_\_\_\_ Exp. Date \_\_\_\_\_ Security Code \_\_\_\_\_

Use this card for all scheduled payments; \_\_\_\_\_ Signature \_\_\_\_\_ Date: \_\_\_\_\_

*\* This deposit may be refunded until June 1.*

*Proposed itinerary subject to change.*

*Cancellation before Aug 15: 1) If we can replace you on the specified trip, we will refund your payments less a 15% cancellation fee. 2) If we cannot replace you, we will refund your payments, less the deposit and the amount already expended on your behalf for trip activities. **No refunds will be available after August 15.***